

Marian Anderson  
 Piatagorski  
 Sergei Rachmanifoff  
 Eleanor Roosevelt  
 Admiral R.E. Byrd  
 Don Cossack  
 Vienna Choir Boys  
 Yehudi Menuhin  
 Lily Pons  
 Jascha Heifetz  
 Artur Rubenstein  
 Harry Belafonte  
 E. Power Biggs  
 Ella Fitzgerald  
 Henry Fonda  
 Marcel Marceau  
 Martha Graham  
 Beverly Sills  
 Risé Stevens  
 Isaac Stern  
 Van Cliburn  
 Vladimir Horowitz  
 Victor Borge  
 Carmen Amaya  
 Andrés Segovia  
 L.A. Philharmonic  
 Amelia Earhart  
 Zubin Mehta  
 Benny Goodman  
 S.F. Symphony  
 Chuck Mangioni  
 Jean-Pierre Rampal  
 PDQ Bach  
 Steve Martin  
 Leontyne Price  
 Hal Holbrook  
 Cary Grant  
 Muhammad Ali  
 Peking Opera  
 Bella Lewitski  
 Frank Zappa  
 Fiona Apple



# BRIDGES AUDITORIUM

THE CLAREMONT COLLEGES

## Technical Specifications and Information

All information current as of September, 1999



450 North College Way, Claremont, CA 91711

### STAFF

Director	Tim Morrison
Events Manager	Sharon Kuhn
Production Manager	Kurt Beardsley
Sound Engineer	Bill Eastham

### PHONE NUMBERS

Bridges Admin. Office (Sharon)	909-621-8031
Backstage	909-621-8486
Bridges FAX Number	909-607-7774
Bridges Info Line	909-621-8032
Facilities Office (Tim)	909-621-8305
Facilities Office FAX	909-621-8398
Production Manager Office (Kurt)	909-607-8580
Traveling Production office	909-607-7778
	909-607-7780

# TABLE OF CONTENTS

<b>SUBJECT</b>	<b>PAGE</b>
SEATING	1
STAGE	1
PARKING	1
RIGGING/FLYS	2
STAGE DRAPES	2
LIGHTING SYSTEM	3
ELECTRICAL INFORMATION	3
SOUND SYSTEM	4
STAGE EQUIPMENT	6
LIGHTING EQUIPMENT	6
INTERCOM SYSTEM	7
ORCHESTRA PIT	7
DRESSING ROOMS	7
LAUNDRY/DRY CLEANERS	7
STAGE CREW	8
EMERGENCY/MEDICAL	8
TRANSPORTATION	9
HOTELS	9
RESTAURANTS	10
GROCERY MARKETS	10
SEATING CHART	Appendix A
FIRST FLOOR PLAN	Appendix B
LINESET INFORMATION	Appendix C
DRESSING ROOM LAYOUT	Appendix D
HOUSE POLICIES	Appendix E
LOCAL AREA MAP	Appendix F
PARKING GUIDE	Appendix G

**SEATING**Auditorium Seating Capacity:

Seats on main floor	1891
Seats in balcony	562
Wheelchairs seats(rear orchestra)	6
Obstructed view seating(balcony)	20
<b>Total</b>	<b>2479</b>
Orchestra Pit seating area	62

First Row Seats to Edge of Stage:

16' to seats  
4' to pit chairs

[See Appendix A, Seating Chart]

**STAGE**Proscenium:

Width 62'0" Height 36'0"

Height of Stage:

3'0" above house floor at front aisle

Depth of stage:

Curtain line to rear stage wall	38'3"
Main curtain to last pipe	30'0"
Edge of apron to rear stage wall	46'3"
with pit extension	55'11"

Curtain line to front of apron:  
(with orchestra pit extension)

8'0" at center  
(17'8" at center)

Width of stage floor (Stage Left Wall to column at Stage Right):

89'4"

Width of stage, wall to wall:

106'8"

Center Stage to Stage Right Wall - clear distance:

62'0" (column at 44'8")

Center Stage to Stage Left Wall - clear distance:

44'8"

Wing Space, Proscenium to Side Wall:

Stage Right 31' Stage Left 13'8"

Height from Stage floor to Underside of Grid:

44'0"

Free Height Stage Right (beginning at 44'8" from center):

15'

Stage Floor:

Flat, softwood with 5/8" particle board surface. Good surface and suspension.

Stage Traps:

None.

Stage Floor Finish:

Burnt umber (dark brown) color - no wax or polish

Stairs to House:

Stage Left and Right - can be covered

Location of Stage:

East side of building

Stage Door:

Northeast corner of building

Orchestra Entrance:

Southeast corner of building

Loading Dock:

Northeast corner of building.

36" High, Stage level, 30' offstage right

Loading Door - Outside:

9'9" Wide, 12' High

Loading Door - Inside:

8' Wide, 15' High

Loading Access:

Access from parking lot - 300' East of College Way on 4th St.- North around building to loading dock.

[See Appendix B, First Floor Plan]

**PARKING**

Parking available for buses, cars, and in parking lot on North and East sides of building. Nearby parking for tractor trailers available. No parking passes necessary.

[See Appendix G, Parking Guide]

**RIGGING/FLYS**

<u>Grid Height:</u>	44'0"
<u>Maximum Flying Height of Pipe:</u>	44'0"
<u>Total Number of Fly Lines:</u>	39 lines 30 counterweight single-purchase # 1-30 9 hemp # A-I
<u>Length of Pipes:</u>	80' <u>Diameter:</u> 1 1/2"
<u>Loading Capacity per Counterweight Set:</u>	2516 lbs.
<u>Capacity after balancing pipe weight:</u>	2295 lbs.
<u>Arbor Length:</u>	10'8". Holds 74 full weights
<u>Distance between line sets:</u>	Varies, see Appendix C Line Set Worksheet
<u>Available pipes for Hanging:</u>	See Appendix C Line Set Worksheet
<u>Battens:</u>	Available on all lines except 6, 12, and 19
<u>All Battens come to 3'6" of floor</u>	
<u>Counterweight Locking Rail Operating Position:</u>	Stage right, stage level
<u>Hemp Line Pin Rail Operation Position:</u>	Stage right, mezzanine level, 18' above stage floor
<u>Total Weight Available:</u>	(After counterbalancing normal house equipment - legs, borders, cyc, orchestra shell clouds, etc.)
	<u>Metal</u> 15,606 lbs. 324 full weight @ 34 lbs. 270 half weight @ 17 lbs.
	<u>Misc. cast iron</u> 7,260 lbs. 212 full weight @ 30 lbs. 60 half weight @ 15 lbs.

[See Appendix C, Line Set Worksheet]

**STAGE DRAPES**

<u>Main Curtain:</u>	Dark blue velour, dead hung, traverse only, 2-man manual operation from Stage Floor, Stage Right
<u>Austrian/Fire Curtain:</u>	Dark blue velour swag, downstage of Main Curtain Electric (20 sec full travel; 10-15 seconds clear) Operation from Stage Floor, Stage Left or Right
<u>Grand Teaser:</u>	70'0" wide X 9'0" high, Grand Teaser, dark blue velour sewn in fullness to match main and fire curtains. Center rigged to open for house speaker.
<u>Borders:</u>	All black velour, sewn flat, movable, hand-tied 3 70'0" wide X 9'0" high 2 70'0" wide X 12'0" high
<u>Legs:</u>	All black velour, sewn flat, movable, hand-tied 10 13'5" wide X 30'0" high—excellent condition 6 13'0" wide X 30'0" high—average condition 2 15'0" wide X 30'0" high—poor condition 2 8'0" wide X 30'0" high—average condition
<u>Backdrop:</u>	Black velour traveler, sewn in 100% fullness 1 70'0" wide X 23'0" high
<u>Cyclorama:</u>	White muslin, seamless flat, fixed position, Hemp Line #1 1 80'0" wide X 30'0" high

**LIGHTING SYSTEM**

<u>Dimmer Control:</u>	ETC Insight 72 Control Console 72 control channels or overlapping submasters 200 cues/show, 2 shows on a 3 1/2" DD diskette 6 non-dims with master House Light control
<u>Board Location:</u>	Center rear of orchestra section (elevated)
<u>Remote Board:</u>	ETC Remote Focus Unit with channel/cue access and record capabilities 6 non-dims with master House Light control
<u>Remote Board Location:</u>	Off-stage right
<u>Dimmers:</u>	60 Kliegel R-71 0-10VDC analog dimmers, 12,000 W each
<u>Non-Dims:</u>	6 switchable non-dims with master, 12,000 W each
<u>Circuits:</u>	300 total 18 Balcony Rail - 17 30 amp; 1 50 amp 20 1st Box Boom - 20 amp 20 2nd Box Boom - 20 amp 20 Proscenium Arch - 20 amp 50 1st Electric - 20 amp 40 2nd Electric - 20 amp 40 3rd Electric - 20 amp 40 4th Electric - 20 amp 52 Floor Pockets - 40 20 amp; 12 50 amp
<u>Non-controllable 110V A.C. 20 amp:</u>	7 on stage 4 in orchestra pit
<u>Balcony Rail Lighting:</u>	3 positions, approximately 90-100' from stage, about a 12° angle

**ELECTRICAL INFORMATION**Company Power Switches:

<b>Switch 1:</b>	(located 15' offstage right)
<u>Capacity:</u>	3 phase, 4 wire, 240V/208V, 60 Hz 3 legs @ 400 amps
<b>Switch 2:</b>	(located 15' offstage right)
<u>Capacity:</u>	3 phase, 4 wire, 240V/208V, 60 Hz 3 legs @ 200 amps separate panel/same transformer, good ground isolation
<b>Switch 3:</b>	(located stage left, lower level, 75' from stage)
<u>Capacity:</u>	3 phase, 4 wire, 240V/208V, 60 Hz 3 legs @ 100 amps separate panel/same transformer, good ground isolation All switches have lug connectors.

## **SOUND SYSTEM**

Mixing Console: Soundcraft K2 – 48 channel with 4 additional stereo line inputs

- 4 band parametric EQ per channel
- 8 group busses
- 8 auxiliary busses
- 4 matrix mixes

Location: Center rear of orchestra section

Soundcraft Series 200 Delta – 24 channel

- 3 band EQ per channel
- 4 group busses
- 4 auxiliary busses

House Processing Equipment

- 4 Behringer Ultra Curve DSP-8000 Third Octave Stereo Equalizers
- 2 PreSonus ACP88 Compressor/Limiter/Gate (total of 16 channels)
- 1 Sabine ADF1200 Feedback Eliminator Workstation

House Loudspeaker System

Three way center cluster comprised of the following components:

Low Frequency:

- 4 JBL 2225H 15 inch low frequency transducers
- 2 JBL 4648 speaker cabinets
- 1 JBL 6290 power amplifier providing 300 watts per transducer

Mid Frequency:

- 2 JBL 2365 Bi-radial Constant Coverage 60 degree by 40 horn with JBL2445J compression driver and JBL 6230 power amplifier providing 300 watts per transducer.
- 1 JBL 2360 Bi-radial Constant Coverage 90 degree by 40 degree horn with JBL 2445H compression driver with a JBL 6230 power amplifier providing 300 watts to the transducer.

High Frequency:

- 4 JBL 2404H Ultra High Frequency Transducers with a JBL 6230 power amplifier providing 75 watts to each transducer.

Processing for the House Loudspeaker System is provided by a BSS Soundweb 9088ML, providing input compression, 12 band parametric equalization, 3 way crossover, transducer time alignment and output limiting.

The House Loudspeaker System in total provides uniform frequency response Throughout the auditorium area from 35 Hz to 20 KHz, plus or minus 5dB. The System can produce 105 dB SPL (full bandwidth weighting) throughout the auditorium.

## Monitor System Components

- 4 JBL MR805 Slant Monitors with 15" Low Frequency Transducer and 80 degree horizontal by 100 degree vertical flat front bi-radial horn with titanium compression driver.
- 4 Electrovoice SX-200 Monitors with 12" EVG-12 Low Frequency Transducer and 65 degree by 65 degree constant directivity horn with DH2005 compression driver.
- 4 Apogee SSM Monitors
- 2 QSC MX1500a Stereo Power Amplifiers (350 watts per channel @ 8 ohms).
- 1 Apogee PA-SSM-RV Processing Power Amplifier.

## Microphones

- 5 Shure SM58 dynamic microphone.
- 5 Shure SM57 dynamic microphone.
- 5 Crown PCC-160 boundary microphone.
- 6 Audio Technica C87-MKII condenser microphone.
- 4 Audio Technica 853RX Unipoint condenser microphone.
- 2 Audio Technica 857QMLA unipoint condenser podium microphone.
- 1 Audio Technica 835B short shotgun condenser microphone.
- 8 Electrovoice RE-15 dynamic microphone.
- 2 Shure SM81 condenser microphone.
- 1 Barcus Berry 4000XL planar wave piano transducer.
- 4 Proco DB-1 Direct Box.

## Microphone Stands

- 8 Atlas MS-20E (Black)
- 4 Atlas MS-25 (Chrome)
- 16 K and M 210 Tripod Stand (Black)
- 16 K and M 91 Standard Boom (Black)
- 4 K and M 259 Short Tripod Stand and Boom Arm (Black)

## Communications

- 1 RTS PS8 power supply – 2<sup>nd</sup> channel available for program feed
- 8 RTS BP325 2 channel beltpack
- 6 RTS BP300 2 channel beltpack
- 6 Beyer DT-108 single muff headset
- 4 Beyer DT-109 double muff headset
- 8 Clearcom 85R single muff headset

## Front of House Show Relay and Paging

Front of House Show Relay is available in all public lobbies, all lounges and the box office. Show relay processing is provided by a BSS Soundweb 9088ML with remote level control provided by a BSS 9010 control panel located at the house manager's position. Processing includes input compression, matrix mixing, parametric equalization and output limiting. F.O.H. paging via the Show Relay System is available at the audio mixing position and the house manager's position. A Roland AR100 digital announcer provides chimes and announcements to the Show Relay System. Program input for the Show Relay System can be selected from a matrix output on the Soundcraft K2 console or from an Audio Technica 835B shotgun microphone mounted on the front edge of the balcony.

## Backstage Show Relay and Paging

Backstage Show Relay and Paging is available in all dressing rooms, the Green Room, the Wardrobe room and the loading gallery. Show relay processing is provided by a BSS Soundweb 9088ML with remote level control provided by a BSS 9010 control panel located at the stage manager's position. Processing includes input compression, matrix mixing, parametric equalization and output limiting. Paging microphones are available at the remote control panel and the stage manager's position. Backstage paging mutes the program feed during the page. Program input for the Show relay system can be selected from a matrix output on the Soundcraft K2 console or from an Audio Technica 835B shotgun microphone mounted on the front edge of the balcony.

## STAGE EQUIPMENT

Orchestra Shell: Adjustable off-white fiberglass  
 Front Opening 60'  
 Side Walls 35'  
 Rear Wall 40'  
 Height 24' D.S. to 18' U.S.  
 Ceiling - 3 adjustable clouds

Risers: Wenger 4' X 8' band risers 24 total  
 10 24"  
 8 16"  
 6 8"

Lectern: Available

## MUSICAL INSTRUMENTS

Piano: Steinway 9' concert grand

## LIGHTING EQUIPMENT

Follow spots: 2 Strong Super Trouper (carbon-arc)

Booms (Trees): 10 available for on-stage lighting

Lighting Instruments:

24 8" (12°)	1000W Colortran Elipsoidal	F.O.H. Balcony Rail
20 6" (20°)	1000W Colortran Elipsoidal	F.O.H. 1st Box Booms
20 6" (15°)	1000W Colortran Elipsoidal	F.O.H. 2nd Box Booms
69 6" (20°,30°,40°)	1000W Colortran Elipsoidal	Stage (15 w/iris)
19 8"	1000W Altman Fresnel	Stage
50	575W Source Four Pars	Stage
10 3-color	1000W Colortran Far-cyc #4 Electric	

Electric Pipes: 4 electric pipes - #1 and #3 are hardwired, #2 and #4 are movable

Connectors: All instruments use a 20 amp, 3-pin connector except the Balcony Rail which use 30 amp, 3-pin

Gel Frames: Available for all instruments

Barn Doors: 50 available for Source Four pars

**INTERCOM SYSTEM**

Hard-wired cable to following locations:

Stage Right (2)  
 Stage Left  
 Fly Rail Stage Right (stage level)  
 Hemp Pin Rail/Counterweight Loading (mezzanine level)  
 Basement/Orchestra Pit  
 Sound Console (2)  
 Light Board (2)  
 Follow spots/Projection Booth (2 + Speaker Station)  
 House Manager F.O.H.

**ORCHESTRA PIT**

Dimensions: 52' wide  
 12' front to rear at center  
 8' deep (4'4" below auditorium floor)

Audience Seating: Can be used for extra seating accommodating 62 chairs  
Variable Depth: Pit is stationary - no hydraulics. Can be raised via scaffolding and platforms to auditorium floor level for audience seating or to stage level to extend apron.  
**This is entirely manual and cannot be done without making advance arrangements.**

Access to Pit: from basement level  
Musicians Accommodated: 30 - 35  
Music Stands: **Advance arrangement required**  
Music Stand Lights: 25  
Piano in Pit: **Advance arrangement required** - upright only  
Conductor's Podium: Available  
Chairs: As needed

**DRESSING ROOMS**

Will accommodate 75-100 people, 2nd and 3rd floors. Freight elevator service available.

2 chorus  
 2 star  
 4 principal

Each room is equipped with: mirrors, make-up lights, sinks, showers, toilet facilities, clothes racks, chairs, heating, monitors and page

**[See Appendix D, Dressing Room Layout]**

Orchestra Room: A room and seats for an orchestra, near toilet facilities, can be made available

**LAUNDRY/DRY CLEANERS**

Nearest Dry Cleaners with Same-Day Service: Rocky's Laundry and Cleaners  
 108 Harvard Ave.  
 Claremont, CA 91711  
 909-626-3967  
 Hours 7:00-5:30

Nearest Laundromat: Launderland Coin-Op Laundry  
 1021 W. Foothill Blvd.  
 Claremont, CA 91711  
 909-625-2230

**STAGE CREW**

Non-union professional stage technicians and trained college students are used for all shows except those which specify yellow card crews in their contract with Claremont University Center and Bridges Auditorium.

Local Stage and Union: I.A.T.S.E. Local 614  
P.O. Box 883  
San Bernardino, CA 92402  
909-888-1828

Local Business Agent: Charles (Chuck) Hamlett  
909-888-1828  
Minor Dixon, Treasurer 909-885-4724

**EMERGENCY AND MEDICAL INFORMATION**Doctors Who Can Handle Emergencies:

Emergency Care: Urgent Medical Care (worker's comp. OK)  
8891 Central Ave.  
Montclair, CA  
909-625-4848

Dentists: John Brown (worker's comp. OK)  
231 N. Indian Hill Blvd., Suite A, Claremont  
909-626-4672

Christopher Schorn  
1262 Harvard Ave., Claremont  
909-624-3534

Orthopedic: James P. Beasom, III, M.D. (worker's comp. OK)  
2776 N. Garey Ave., Pomona  
909-593-7437

Nearest Hospital: Pomona Valley Community Hospital  
1798 N. Garey Ave., Pomona  
909-623-8715

Campus Security: Extension 72000 or 18170 (on campus), 909-621-8170 (off campus)

Fire/Paramedic: Contact Campus Security at Ext. 72000 or 18170

Police: Contact Campus Security at Ext. 72000 or 18170

**TRANSPORTATION**Local Charter Bus Companies with touring coaches:

Pacific Coachways  
 Charter Services  
 Pomona, CA  
 909-629-9288

Inland Empire  
 Tours and Transportation  
 909-946-8707

Local Bus Company with Shuttle Busses:

Pomona Valley Transportation Authority  
 2120 Foothill Blvd.  
 La Verne, CA 91750  
 \$25/hr. for bus and driver (4hr. minimum)  
 909-596-7664 (call for reservation)  
 Mike Kopaczewski (arranges details)  
 909-865-5184

Taxicab Companies: Yellow Cab Company  
 909-622-1313

Limosine Service: Bordeaux Limousines  
 406 S. Lemon Ave.  
 Walnut, CA 91789  
 contact: Sean Dunbar  
 909-861-6567

**HOTELS**

The Claremont Inn  
 555 W. Foothill Blvd.  
 Claremont, CA 91711  
 909-626-2411  
 (fully equipped motel/hotel with shops, dining, pool, Jacuzzi, etc. on premises. 1/2 mile from venue.)

Ramada Inn  
 840 S. Indian Hill Blvd.  
 Claremont, CA 91711  
 800-228-2828 toll free  
 909-621-4831  
 909-626-8452 FAX  
 (Restaurant, pool, Jacuzzi, laundry, tennis courts. Restaurants and shopping nearby.)  
 (1 mile from venue. Just off I-10 San Bernardino Fwy.)

Travelodge  
 736 S, Indian Hill Blvd.  
 Claremont, CA 91711  
 909-626-5654,  
 (1+ mile from venue. Just off I-10 San Bernardino Fwy.)

Ontario Airport Hilton  
 700 N. Haven Ave.  
 Ontario, CA 91764  
 909-980-0400  
 (approx. 8 miles from venue)

**RESTAURANTS**

Bucca DiBeppo  
 701 S. Indian Hill Blvd.  
 Claremont, CA 91711  
 909-626-8732  
 open until 11:00 p.m. 7 days  
 The Claremont Inn

Baker's Square  
 710 S. Indian Hill Blvd.  
 Claremont, CA  
 909-621-4745  
 6:00 a.m. to 11:00 p.m. weekdays/12:00 wkends  
 Near Ramada & Travelodge

Chili's Grill and Bar  
 407 Claremont Center Dr.  
 Claremont, CA 91711  
 909-625-4844  
 11:00 a.m. to 10:30 p.m. Sun-Thu  
 11:00 a.m. to 12:00 a.m. Fri/Sat  
 Near Ramada and Travelodge

Walter's Restaurant  
 316 Yale Ave.  
 Claremont, CA 91711  
 909-624-2779  
 7:00 a.m. to 9:00 p.m. Mon-Sat  
 8:00 a.m. to 9:00 p.m. Sun  
 Near Venue

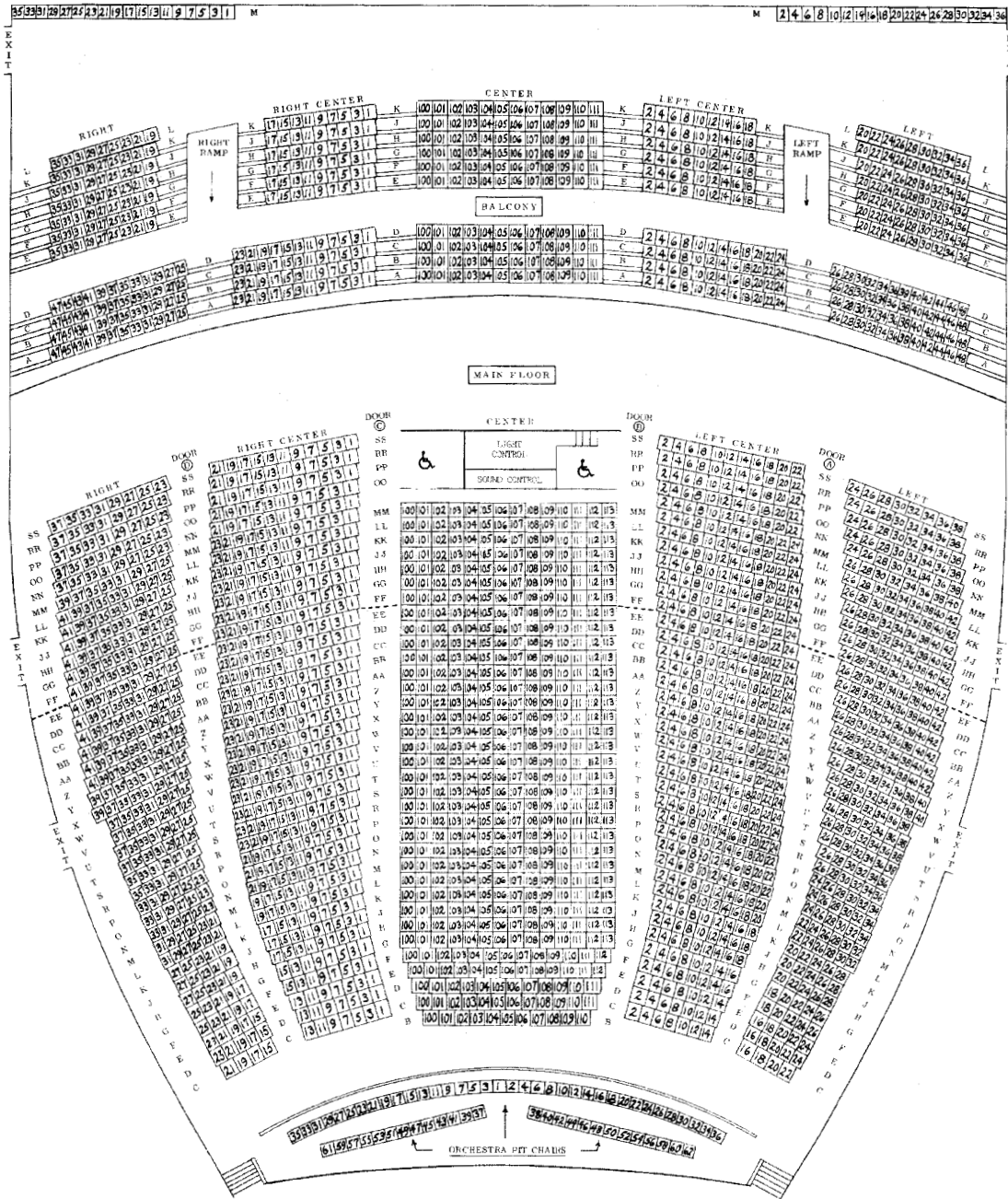
Please ask us for more information about fast food, 24 hour, take-out, ethnic, or personal preferences in restaurants.

**GROCERY MARKETS**

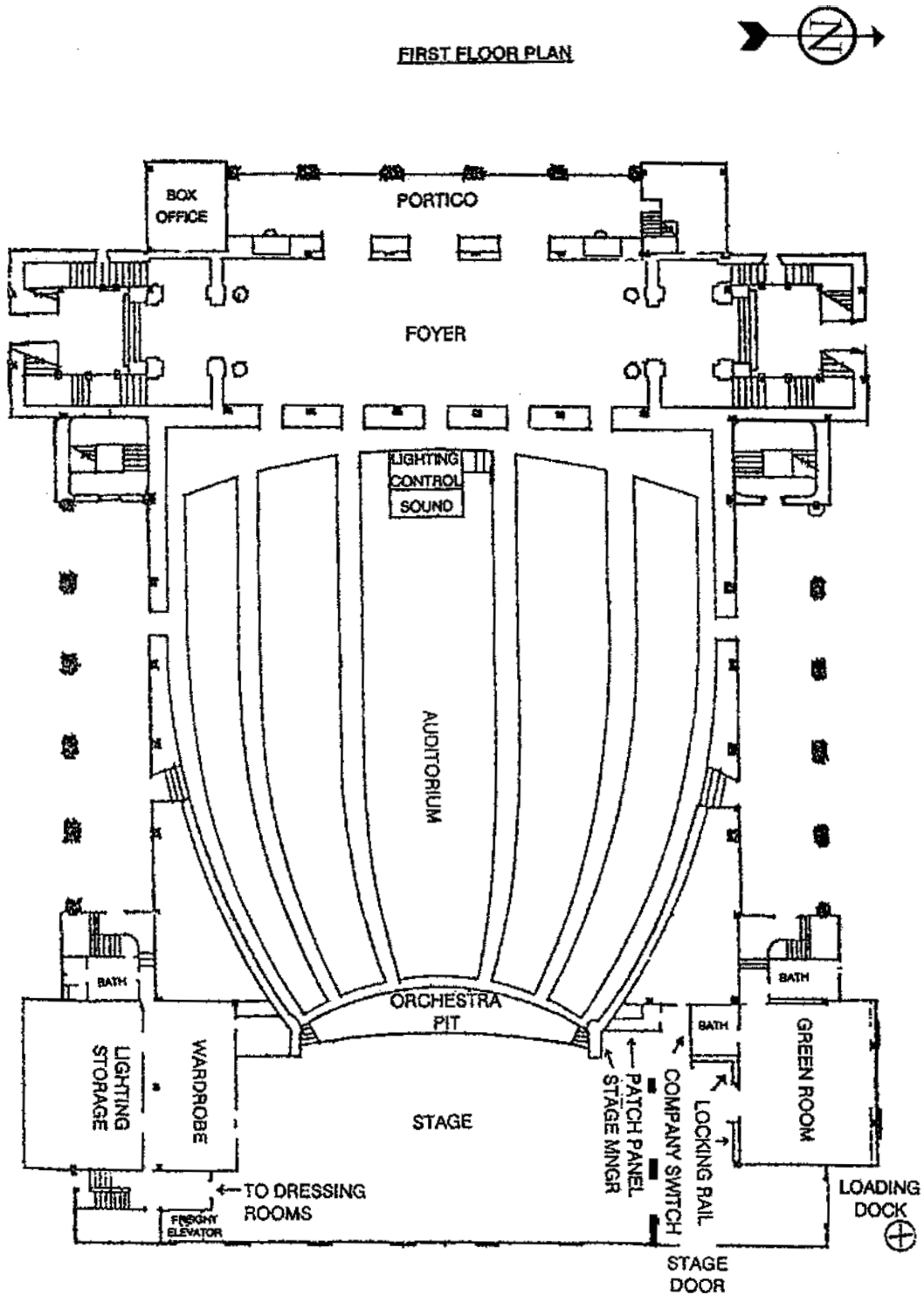
Ralph's  
 835 W. Foothill Blvd.  
 Claremont, CA 91711  
 909-625-2659  
 Hours: Mon-Fri 6:00 a.m. to Midnight  
 Sat/Sun 7:00 a.m. to 11:00 p.m.  
 (1/2 mile from Claremont Inn)

Wolfe's Market  
 160 W. Foothill Blvd.  
 Claremont, CA. 91711  
 909-626-8508  
 Near venue

# Bridges Auditorium Seating



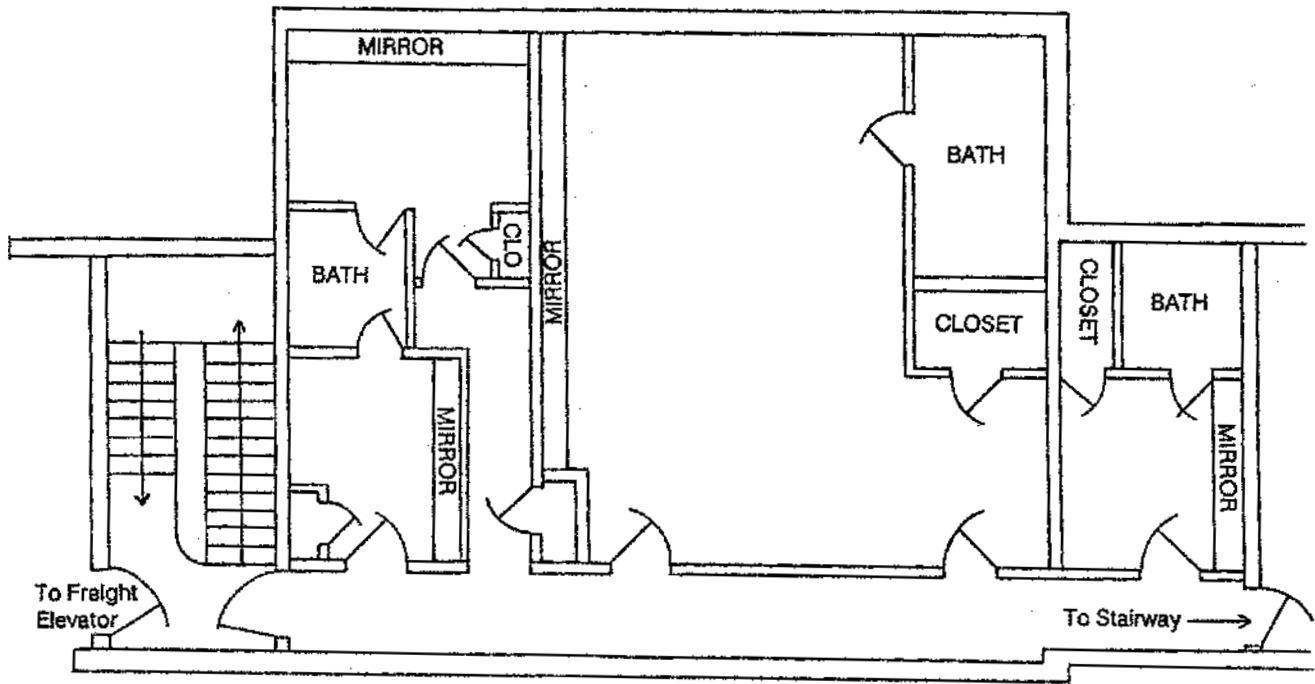
# Bridges Auditorium First Floor Plan



## Lineset Information

APPENDIX C BRIDGES AUDITORIUM					
LINES 1-30: Single-purchase counterweight; operate from stage level stage right					
LINES A-I: Hemp and sandbag; operate from mezzanine level stage right					
LINESET NUMBER	DISTANCE FROM PROCENIUM	DISTANCE TO NEXT LINESET	LINESET STATUTS AVAILABLE FOR HANGING UNLESS OTHERWISE INDICATED	HOUSE HANGING SCHEDULE	WEIGHTS OF HOUSE SCHEDULE
	1' 0"		NOT AVAILABLE-DEAD HUNG	AUSTRIAN/DELUGE DRAPE (electric fly)	
1	2' 8"	7"	NOT AVAILABLE	GRAND TEASER	
			NOT AVAILABLE-DEAD HUNG	GRAND DRAPE (traveller-2 man)	
2	3' 3"	7"			
3	3' 10"	6"			
4	4' 4"	18"			
5	5' 10"	17"	#1 ELECTRIC (permanent raceway)	#1 ELECTRIC (permanent raceway)	
6	7' 3"	14"			
7	8' 5"	14"		LEGS	
8	9' 6"	11"			
A	10' 5"	14"	SPLIT LINESET		
9	11' 7"	11"			
10	12' 8"	9"			
B	13' 3"	21"	SPLIT LINESET	LEGS	
11	15' 0"	12"		#2 ELECTRIC (2 moveable raceways)	
12	16' 0"	6"			
13	16' 6"	6"			
C	17' 0"	6"	FULL LINESET		
14	17' 6"	10"			
D	18' 4"	8"	FULL LINESET	BORDER	
15	19' 0"	8"			
E	19' 8"	10"	SPLIT LINESET	LEGS	
16	20' 6"	5"			
17	20' 11"	12"			
18	21' 11"	18"	#3 ELECTRIC (permanent raceway)	#3 ELECTRIC (permanent raceway)	
F	23' 5"	7"	FULL LINESET		
19	24' 0"	8"			
G	24' 8"	5"	SPLIT LINESET	LEGS	
20	25' 1"	5"			
21	25' 6"	12"			
H	26' 6"	6"	FULL LINESET	BORDER	
22	27' 0"	6"			
23	27' 6"	6"			
24	28' 0"	6"		#4 ELECTRIC (2 moveable raceways)	
25	28' 6"	6"			
26	29' 0"	12"			
27	30' 0"	12"			
28	31' 0"	12"			
29	31' 6"	6"			
30	32' 0"	12"	NOT AVAILABLE	BLACK TRAVELLER 100% FULLNESS	
I	33' 0"		NOT AVAILABLE	CYCLORAMA	

# Dressing Room Layout



BRIDGES AUDITORIUM  
DRESSING ROOM LAYOUT

NOT TO SCALE  
TYPICAL, TWO FLOORS

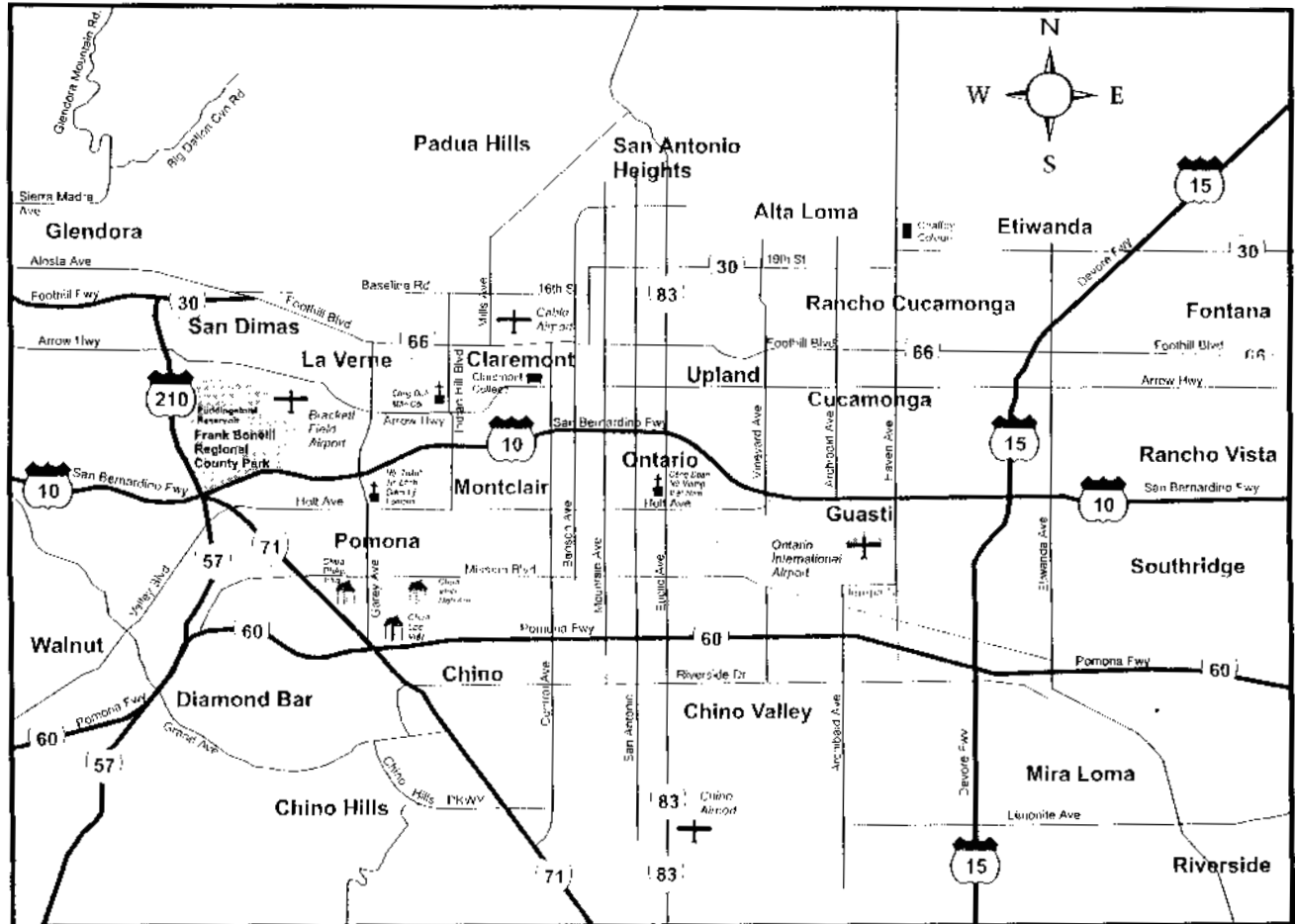
## House Policies

**BRIDGES AUDITORIUM  
CLAREMONT UNIVERSITY CENTER  
THE CLAREMONT COLLEGES  
CENTER FOR THE PERFORMING ARTS**

1. All touring sound boards not operated on stage must utilize the areas labeled as sound control on the seating chart (appendix A). Minimum cable run from stage right requires 150' (feet) to mixing location.
2. No smoking is allowed within the auditorium house or foyer areas.
3. No company or performance personnel may be in the seating area of the auditorium in rehearsal clothing, costume, or make-up when the house is open, except as an integral part of the performance or presentation at the actual time it is presented.
4. Determination for use of the Green Room is reserved by Bridges Auditorium/Claremont University Center.
5. No souvenirs or related articles, including but not limited to programs, T-shirt, posters, or books may be placed on sale until a representative of Bridges Auditorium/Claremont University Center has been allowed to count and record all such items for the purpose of settlement of percentage of sales of such items as stipulated in the contract and addendum between Bridges Auditorium/Claremont University Center and presenting of performing company or artist.
6. Standard policy for opening the front of the house to the public is 45 minutes prior to the performance. In cases of emergency or special circumstances, the opening of the front of the house may be held for a maximum of 15 minutes. Such a decision is reserved by Bridges Auditorium/Claremont University Center. Prior to opening the house, the appropriate representative (stage manager or company manager) of the performing company shall be so notified by the staff member of Bridges Auditorium/Claremont University Center responsible for the front of the house operations.



# Area Map



# Parking Guide

